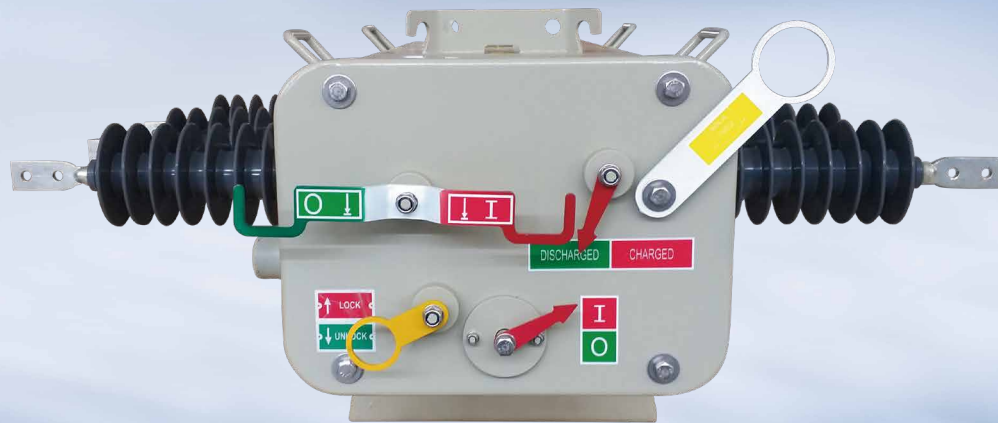


NOVAw

Outdoor Pole Mounted SF6 Load Break Switch

COOPER POWER
SERIES





Automotive



Aerospace



Truck



Hydraulics



Electrical

Powering business worldwide

Eaton delivers the power inside hundreds of products that are answering the demands of today's fast changing world.

We help our customers worldwide manage the power they need for buildings, aircraft, trucks, cars, machinery and entire businesses. And we do it in a way that consumes fewer resources.

Next generation transportation

Eaton is driving the development of new technologies – from hybrid drivetrains and emission control systems to advanced engine components – that reduce fuel consumption and emissions in trucks and cars.

Higher expectations

We continue to expand our aerospace solutions and services to meet the needs of new aviation platforms, including the high-flying light jet and very light jet markets.

Building on our strengths

Our hydraulics business combines localised service and support with an innovative portfolio of fluid power solutions to answer the needs of global infrastructure projects, including locks, canals and dams.

Powering Greener Buildings and Businesses

Eaton's Electrical Group is a leading provider of power quality, distribution and control solutions that increase energy efficiency and improve power quality, safety and reliability. Our solutions offer a growing portfolio of "green" products and services, such as energy audits and real-time energy consumption monitoring. Eaton's Uninterruptible Power Supplies (UPS), variable-speed drives and lighting controls help conserve energy and increase efficiency.



MV switchgear technology is in our DNA

Eaton Corporation is a worldwide leader in the design, manufacture, and sale of safe, reliable and high-performance medium voltage power distribution equipment in accordance with IEC, ANSI and GB / DL standards

Complete Global Medium Voltage Switchgear Solutions

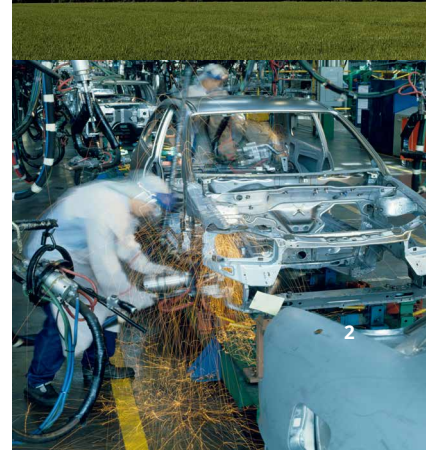
Eaton, a premier leader in designing and manufacturing power distribution and protection equipment in the electrical industry, offers a comprehensive range of medium voltage (MV) solutions to meet the needs of virtually every application. From products that feature cutting-edge design that allow for easy access, maintenance and space savings, to arc-resistant products that enhance safety, Eaton's medium voltage solutions provide a variety of products for every need. Additionally, Eaton's global service network provides maximum customer support in all regions of the world.

As one of the few completely vertically integrated and diversified industrial manufacturers in the world, Eaton designs not only MV assemblies, but also the key components that comprise the MV solutions – from steel housing and circuitbreaker compartments to vacuum interrupters, circuit breakers, bus systems and fuses.

Eaton's MV heritage, strengthened by acquisitions such as Westinghouse DCBU, Cutler Hammer, MEM and Holec, has resulted in breakthrough MV technologies and numerous international patents over the years.

Part of Eaton's complete electrical PowerChain Solutions – which help businesses minimize risks while realizing greater reliability, cost efficiencies, capital utilization and safety – Eaton's medium voltage equipment meets all applicable standards and certifications such as IEC, NEMA / ANSI, GB / DL, UL, IEEE, KEMA and CSA.

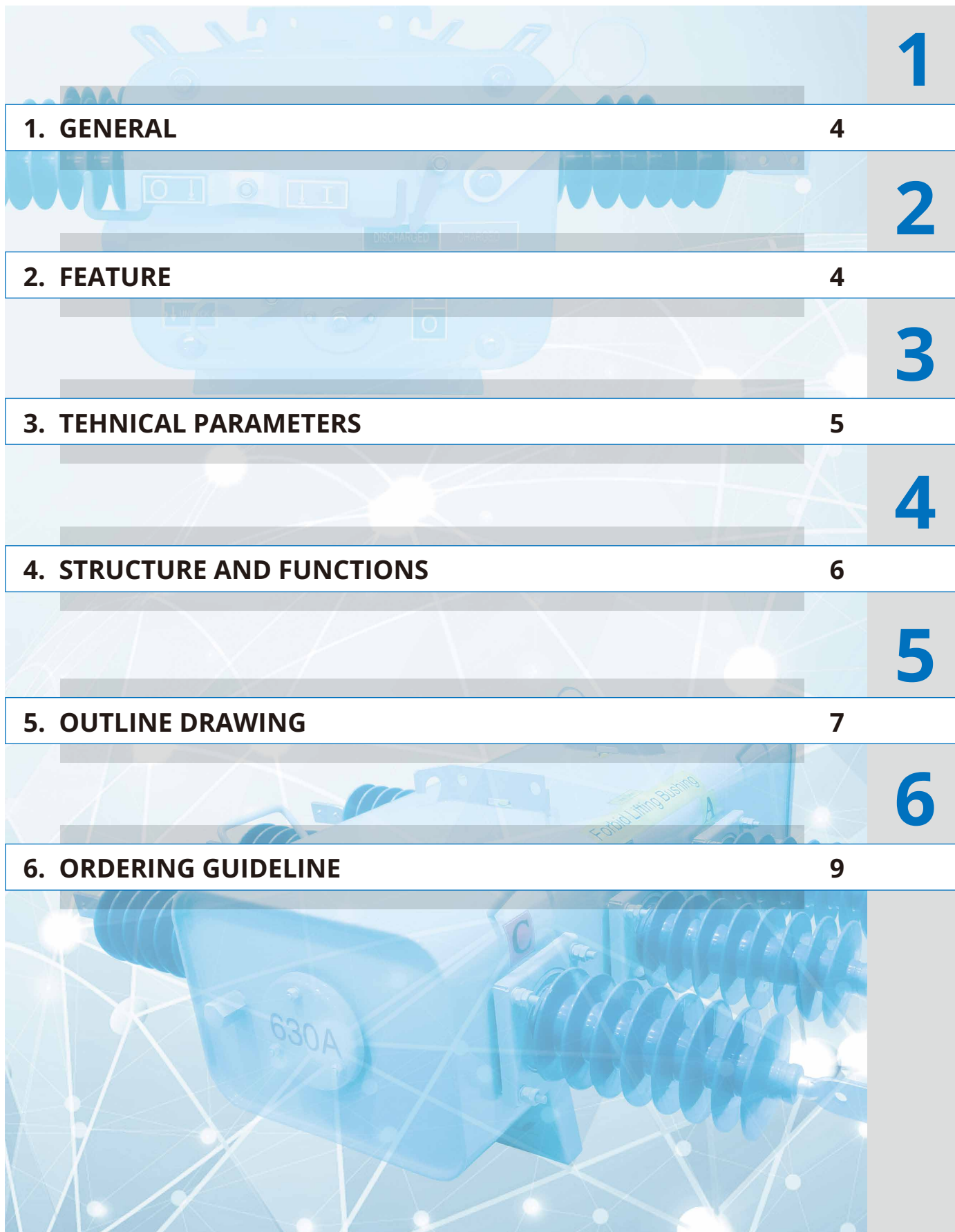
When it comes to medium voltage solutions, you can trust the one name with a long history of proven performance: Eaton.



NOVAw Outdoor Pole Mounted SF6 Load Break Switch

Contents

	1
1. GENERAL	4
	2
2. FEATURE	4
	3
3. TEHNICAL PARAMETERS	5
	4
4. STRUCTURE AND FUNCTIONS	6
	5
5. OUTLINE DRAWING	7
	6
6. ORDERING GUIDELINE	9



1. General

General

NOVAw is three phase SF6 gas insulated load break switch designed for overhead line application for a voltage of up to 38kV. Completely maintenance free with ability of manual and motor operation.



Standard

IEC 62271-103	High-voltage switchgear and controlgear - Part 103 Switches for rated voltages above 1 kV up to and including 52 kV
IEC62271-1	High-voltage switchgear and controlgear - Part 1: Common specifications
IEC60060-1	High-voltage Test Techniques - Part 1: General definitions and test requirements
IEC60529	Degrees of protection provided by enclosures (IP Code)

2. Feature

- Stainless steel tank
- SF6 gas insulated and arc quenching
- Spring Mechanism
- Manual and motor operation
- Can provide FXD LBS control for metering, monitoring, recording, and communication functions

NOVAw Outdoor Pole Mounted SF6 Load Break Switch

Technical Parameters

3. Technical parameters

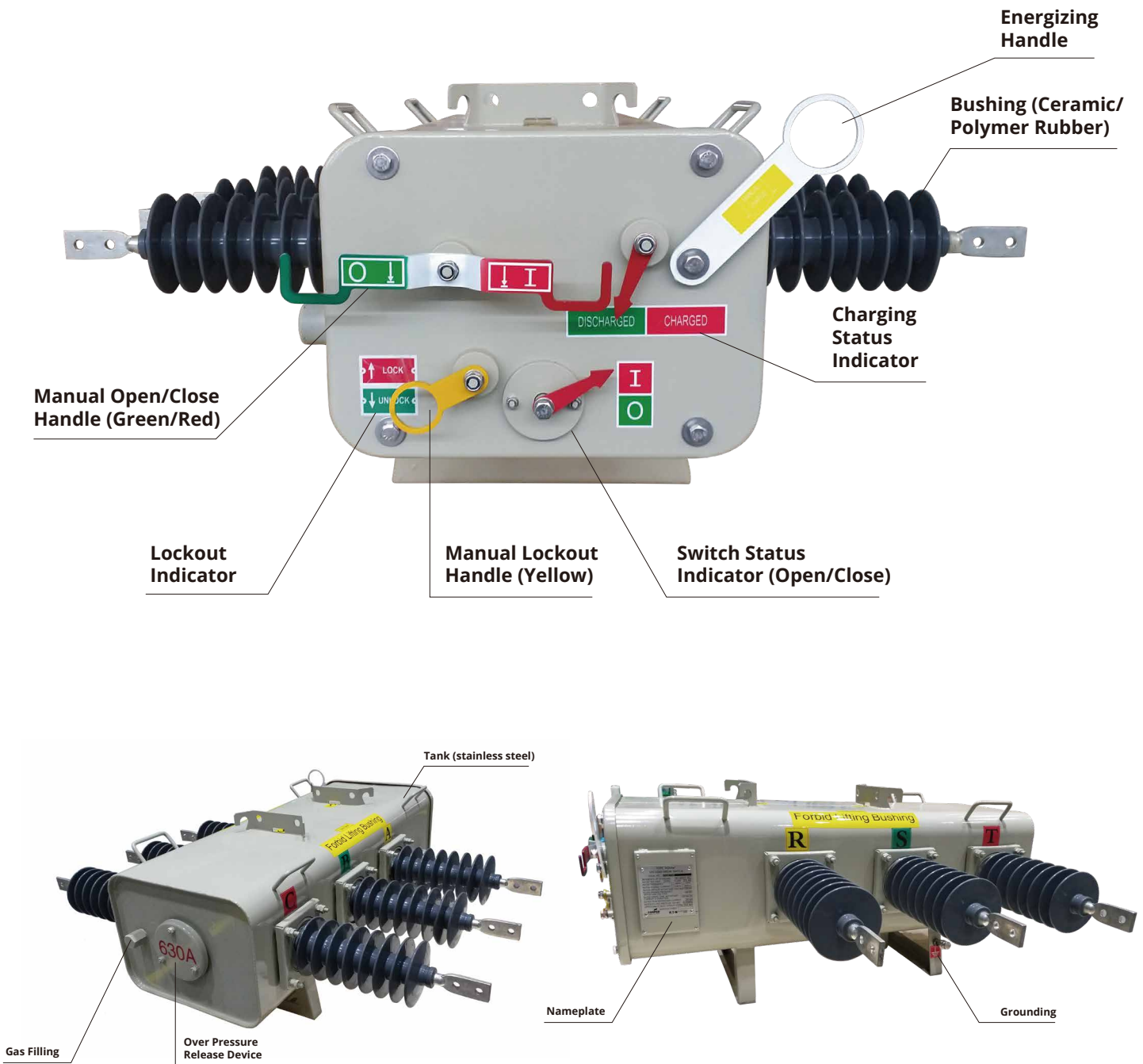
Operation Condition

- Ambient air temperature: Max 80 degc, Min -40 degc
- Altitude: $\leq 3500\text{m}$
- Relative humidity: $\leq 100\%$
- Wind pressure: $\leq 700\text{Pa}$
- The earthquake level: ≤ 8 degree

Parameters

Item		Unit	Parameter	
Rated voltage		kV	24	38
Rated current		A	630	
Rated frequency		Hz	50/60	
Short-time withstand current		kA	20 / 3sec	
Marking Current		kA	50 / 5 times	
Power frequency withstand voltage /1min	Phase-phase, -to-earth	kV	50	70/95(optional)
	Across open gap	kV	60	70
Lightning impulse withstand voltage	Phase-phase, -to-ground	kV	125	200
	Across open gap	kV	145	170/200(Optional)
Mechanism			Spring	Motorized
Electric life at Rated mainly active load current		times	100(E3)	
Mechanical life		times	10000	
Auxiliary circuit power frequency withstand voltage		V	2000 / 1min	
Rated motor voltage		V	DC24, DC48/AC220/DC220 optional	
Motor operation voltage range		V	80%~120% of DC24	
Relative leakage rate of SF6 gas			$\leq 0.5\%$	
Enclosure			Stainless steel	
IP			IP67	

4. Structure and functions

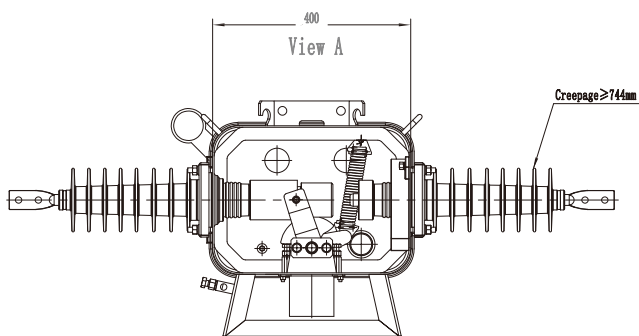
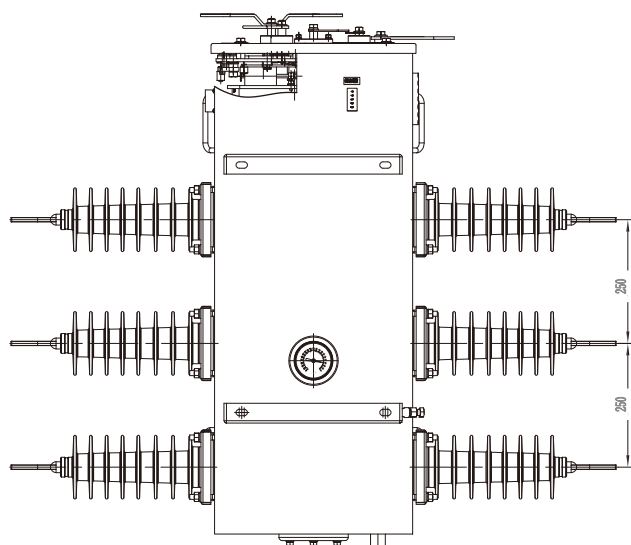
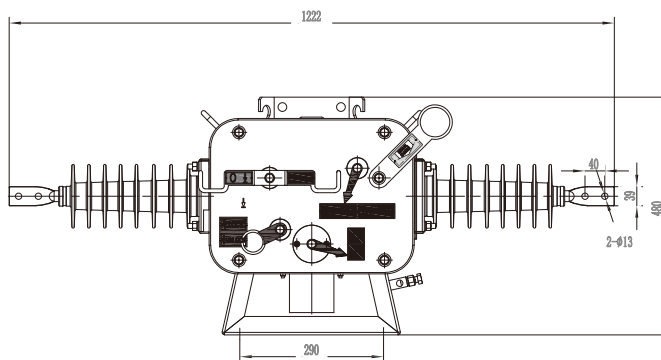
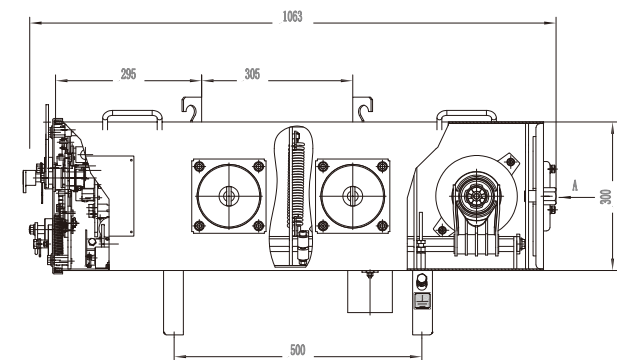


NOVAw Outdoor Pole Mounted SF6 Load Break Switch

Outline drawing

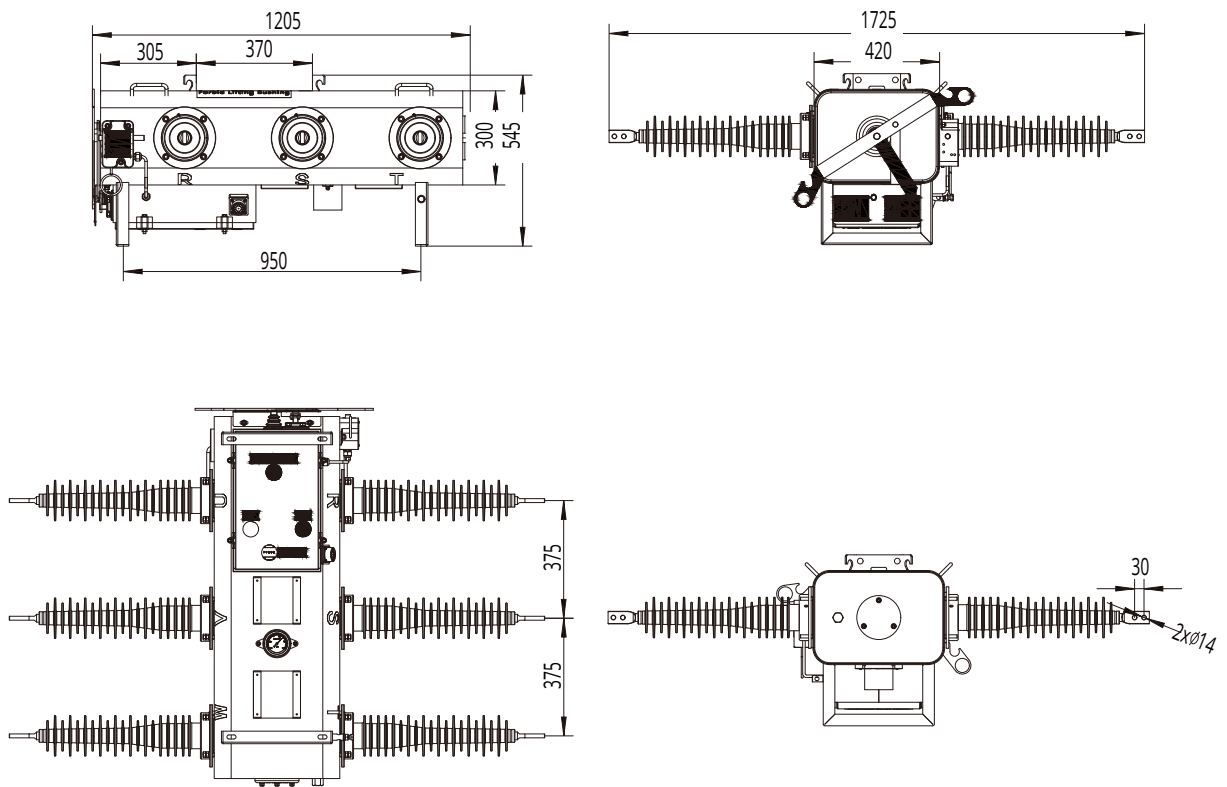
5. Outline drawing

NOVAw 24kV



5. Outline drawing

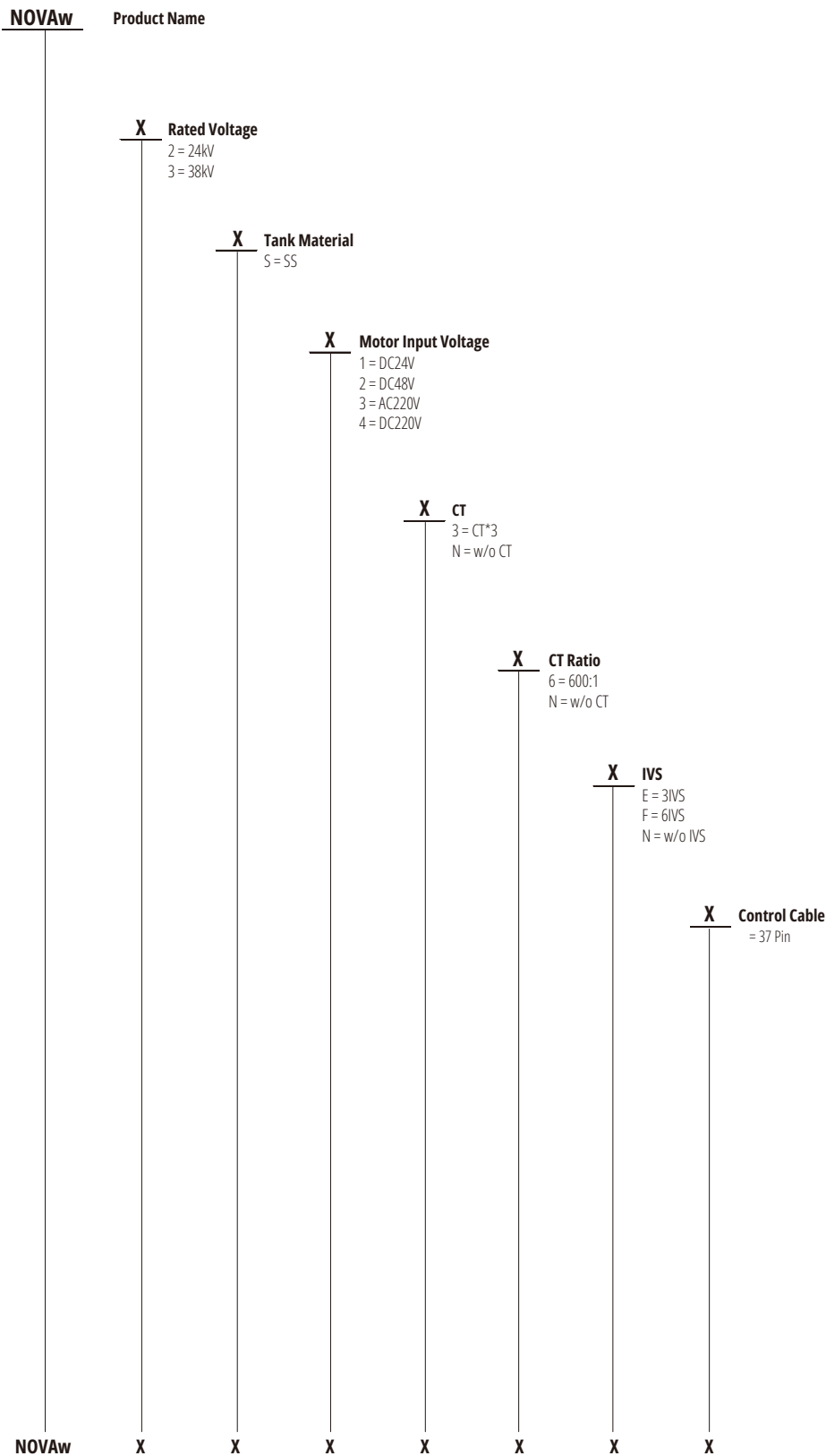
NOVAw 38kV



NOVAw Outdoor Pole Mounted SF6 Load Break Switch

Outline drawing

6. Ordering guideline



Eaton is an intelligent power management company dedicated to protecting the environment and improving the quality of life for people everywhere. We make products for the data center, utility, industrial, commercial, machine building, residential, aerospace and mobility markets. We are guided by our commitment to do business right, to operate sustainably and to help our customers manage power — today and well into the future. By capitalizing on the global growth trends of electrification and digitalization, we're accelerating the planet's transition to renewable energy sources, helping to solve the world's most urgent power management challenges, and building a more sustainable society for people today and generations to come.

Eaton was founded in 1911 and has been listed on the New York Stock Exchange for more than a century. We reported revenues of \$23.2 billion in 2023 and serve customers in more than 160 countries. Eaton entered the Chinese market in 1993 and has grown significantly since then. In 2004, Eaton moved its Asia-Pacific headquarters from Hong Kong to Shanghai. Today, Eaton has nearly 8,000 employees and 19 manufacturing facilities in China.

For more information about Eaton China, visit www.eaton.com.cn

Eaton Corporation

No.3, Lane 280, Linhong Road,
Changning District,
Shanghai, China 200335

Cooper Power Systems

No. 955 Shengli Road, Zhangjiang
East High-Tech Zone,
Shanghai, China 201201

© 2024 Eaton Corporation
All Rights Reserved
Printed in China
CA-2024-EN-09 (07-2024)

Eaton is a registered trademark
of Eaton Corporation.

All trademarks are property of their
respective owners.