

XAP Busway

XAP Track Busway

Rated Current 160 630A

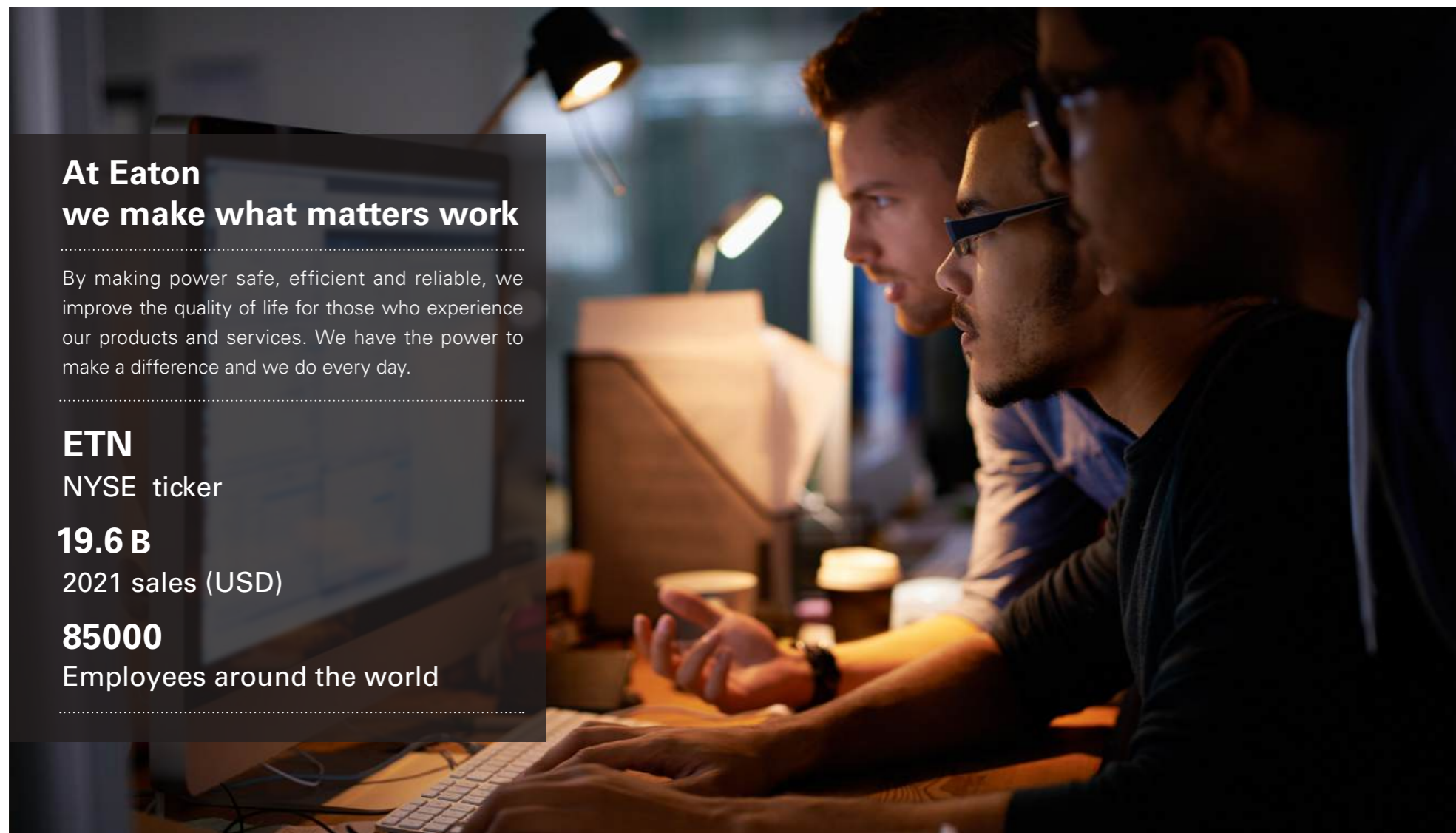


EATON

Powering Business Worldwide

We're dedicated to improving people's lives and the environment with power management technologies that are more reliable, efficient, safe and sustainable.

We are a power management company doing business in more than 175 countries. Our energy-efficient products and services help our customers effectively manage electrical, hydraulic and mechanical power more reliably, efficiently, safely and sustainably. By giving people tools to use power more efficiently. Helping companies do business more sustainably. And by encouraging each and every employee at Eaton to think differently about our business, our communities—and the positive impact we can have on the world.



**At Eaton
we make what matters work**

By making power safe, efficient and reliable, we improve the quality of life for those who experience our products and services. We have the power to make a difference and we do every day.

ETN

NYSE ticker

19.6 B

2021 sales (USD)

85000

Employees around the world

CATALOGUE

Product features	/ 12
Technique data	/ 14
Functional unit	/ 16
Guide Rail Busway Power Monitoring System	/ 20

SINCE 1911

Eaton was founded by Joseph Eaton in 1911 and started to produce Power distribution buway in 1935.

Eaton's continuous innovation in the busway product line not only ensures the economy and reliability of its solutions, but also integrates excellent technology that can be installed horizontally or vertically. To seek the perfect combination of technical performance and exquisite design, Eaton XAP series busway system will be your wisest choice.

Based on local manufacturing

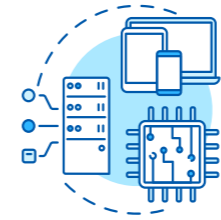
Eaton Busway (Jiangsu) Co.,Ltd

According to Eaton's innovative spirit, one hundred years of technology accumulation and the development ability of the Asia Pacific market, Eaton busway factory has continuously introduced new products, It has realized the independent R & D and manufacturing of busway in the Asia Pacific region, providing customers with high-quality products and satisfactory solutions.



Top manufacturing solutions

Eaton busway manufacturing plant covers an area of 12,000 square meters and has the industry's top manufacturing solutions to fully ensure the high-precision manufacturing of products.



Advanced insulation technology

Self research and development fully automatic Polyester film insulation wrapping equipment Improve the standardization of product manufacturing



Full automatic busway assembly line

integrating assembly, inspection and packing together, effectively guarantees delivery time and greatly improves project execution.



Intelligent warehousing improves delivery efficiency

Intelligent warehouse can accept more busway, and the storage capacity is 4 times that of the traditional warehouse.



Dispatching center makes service faster

Online dispatching of national technical service staff view the progress of various services in real time make pre-sales and after-sales service more worry free



Refinement of production management

Standardized production management Plant performs MES system, which can display production, quality, safety and contract execution data on real-time.

OUR ADVANTAGE

EATON owns state of art manufacturing system in the industry, it brings "high, precision and top" features to the products.



German Trumpf laser cutting and Trupunch ensures $\pm 0.1\text{mm}$ accuracy for sheet-metal parts.



Canadian Accurpress, German Behringer, Italian Euromac and Ameppessta sheet-metal system enable parts to achieve International high quality level.



Application of Panasonic automatic welding, laser welding and automatic riveting technology highly improves production efficiency.

EATON owns independant laboratory for research and development ,which always brings customers high quality product and electricity safety.



Temperature rise system allows max 6300A, which ensures product performance to reach design expectation.



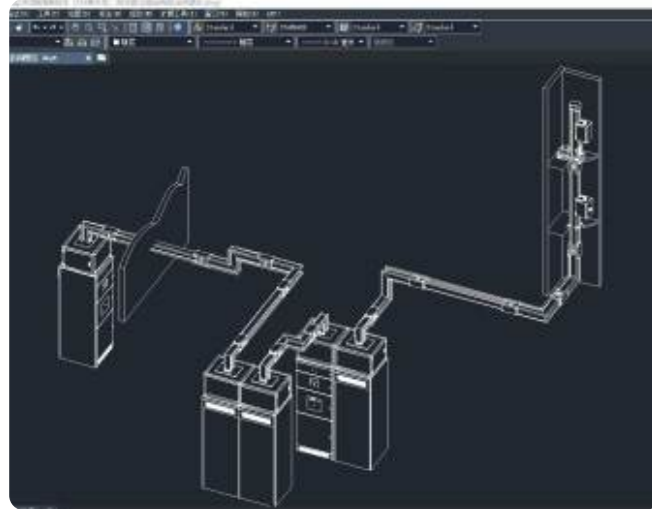
Application of dust simulation tank and water spray platform give product superior IP protection degree performance at the research stage.



Perform strict quality control on IQC, IPQC and OQC to secure product "Zero deflection" upon ex-factory.

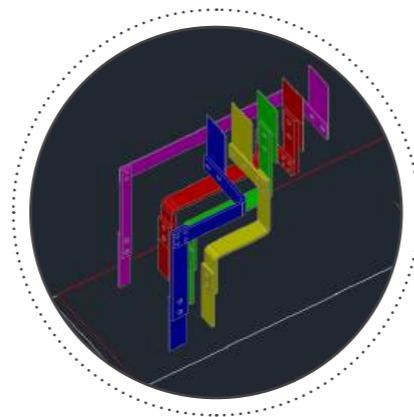
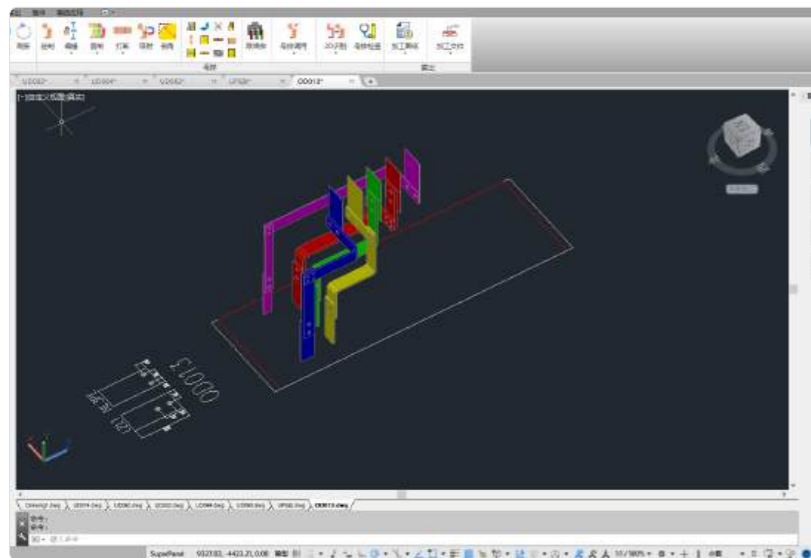
OUR ADVANTAGE

EATON always sticks to innovation research and development, pushes busway technology to safe, energy saving and intelligent direction.



Advanced 3D engineering software, integrated with product features, quickly optimise the busway layout, offers first-best arrangement to the project.

Intelligent superpanel technology brings power to distribution system and provides customer with reliable power supply solution.



Manufacturing center sets up MES system and Intelligent factory data platform, closely butts with ERP, achieves the jump over from product manufacturing to "intelligent manufacturing".



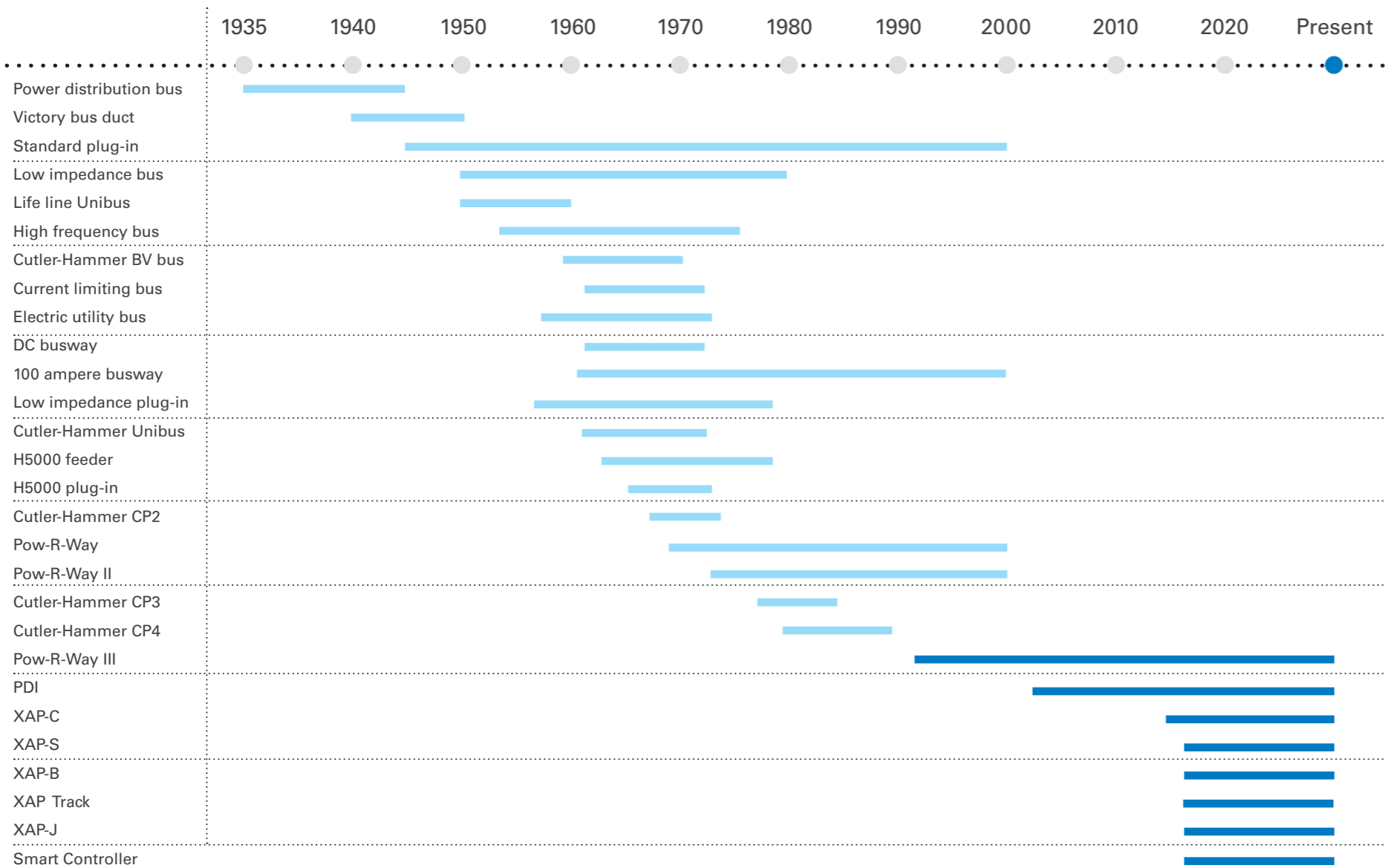
MES system precisely records all the process data and makes all the manufacturing data trackable.

Intelligent factory data platform fully monitors the factory operation efficiency by statistic and analysis of all the data related with manufacturing, quality and safety.

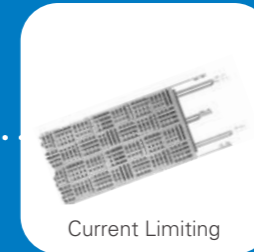
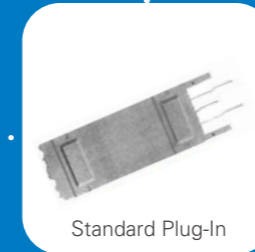


KEEP INNOVATION SINCE 1935

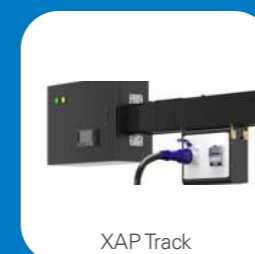
In 1935, comes out first type of busway "power distribution bus".



1935



Eaton busway history can be traced back to 1935 last century. 1st busway was called "power distribution bus", which consists of aluminum or copper bars inside a metal housing used for power distribution. it is available from 100–5000A.



XAP Track busway

product features

01

Flexible distribution, better application

Small volume and light weight, housing adopts track rail design, which can easily meet various installation requirements. The busway and plug-in box are configured in a variety of configurations, which brings more site application and better flexibility performance.

02

Plug and play, simple and efficient

Prefabricated connection components, simple and fast connection between sections, without special installation tools, Plug & play for unit installation makes power transmission and distribution easier.

03

Couple toughness with softness, intelligent operation and maintenance.

The whole length of the system can be plugged (including joint), real time monitoring electric energy data and information, rapid early warning and intelligent monitoring system make operation as well as to maintenance more convenient.

04

Devise strategies and potential expansion

The universal housing can save the space of the cold channel in the machine room, facilitate the user to adjust the load and expand, and save the transformation time and cost.

05

Safe and stable, careful protection

Error proof self-locking design of tap off unit and zero fault insertion. PE comes in first and comes out last, safer for tapping in and out.

- Busway is designed with track rail, and the plug in box can be installed at any point to achieve flexible power supply.
- Plug in box is installed vertically with gravity in the center, which ensures stable structure.
- Rated short time withstand current is up to 30kA, and rated peak withstand current circuit is 63kA, which makes busway more reliable and safer.
- Overall dimensions of Track busway up to 630A are consistent, which enables Track busway to be easily expanded.
- Monitor various electric power data in real time and accurately predict risks and ensure power safety.
- Replace the column head cabinet, save the installation space on the top of the cabinet and improve the overall operation efficiency of the data center.

XAPTrack Series Busway

Technique data

Item	Unit	Current rating			
Product standard	IEC 61439.6-2012				
Certificate	CQC、KEMA				
System	3P4W, 3P5W				
Structure	Rail type				
Installation type	Horizontal				
Wiring	Bolt connection				
IP	IP42				
Mechanical impact protection	IK10				
Surface anti-corrosion measures	Electrophoresis/anodic oxidation				
Application	Indoor				
Rated current	A	160	250	400	630
		Resistance			
Resistance(R20)	mΩ/m	0.384	0.231	0.174	0.087
Theory reactance(X)	mΩ/m	0.386	0.233	0.177	0.090
		Voltage drop			
Power factor 0.6	V/m	0.073	0.073	0.089	0.076
Power factor 0.7	V/m	0.083	0.081	0.099	0.083
Power factor 0.8	V/m	0.092	0.089	0.109	0.090
Power factor 0.9	V/m	0.101	0.097	0.118	0.096
Power factor 1.0	V/m	0.106	0.100	0.121	0.095
Weight	kg/m	11.68	12.21	12.75	14.94
Rated operational voltage(Ue)	V	1000			
Rated insulation voltage(Ui)	V	1000			
Rated frequency(fn)	Hz	50 / 60			
Rated short-time withstand current(lcw)	kA	15	15	20	30
5s power frequency withstand voltage	V	2200			
Lightning impulse voltage(limp)	kV	8			
Electric clearance	mm	12.5			
Creepage distance	mm	16			
Horizontal housing allowable max temperature rise	K	55			
Horizontal conductor allowable max temperature rise	K	70			

Plug in box technique data

Item	Unit	Current rating		
Rated current	A	32	63	100
Rated operational voltage(Ue)	V	400		
Rated insulation voltage(Ui)	V	660		
Rated frequency(fn)	Hz	50 / 60		
Rated short-time withstand current(lcw)	kA	10k		
5s power frequency withstand voltage	V	2200		
Lightning impulse voltage(limp)	kV	8		
IP		42		
Horizontal housing allowable max temperature rise	K	55		
Horizontal conductor allowable max temperature rise	K	70		
Length	mm	600	650	700
Width	mm	116	116	116
Height	mm	250	250	250

End tap box technique data

Item	Unit	Current rating			
Rated current	A	160	250	400	630
Rated operational voltage(Ue)	V	690			
Rated insulation voltage(Ui)	V	800			
Rated frequency(fn)	Hz	50 / 60			
Rated short-time withstand current(lcw)	kA	15	15	20	20
5s power frequency withstand voltage	V	2200			
Lightning impulse voltage(limp)	kV	8			
IP		42			
Horizontal housing allowable max temperature rise	K	55			
Horizontal conductor allowable max temperature rise	K	70			
Length	mm	400	400	400	400
Width	mm	200	200	250	250
Height	mm	400	500	600	700

XAPTrack Series Busway

Functional unit

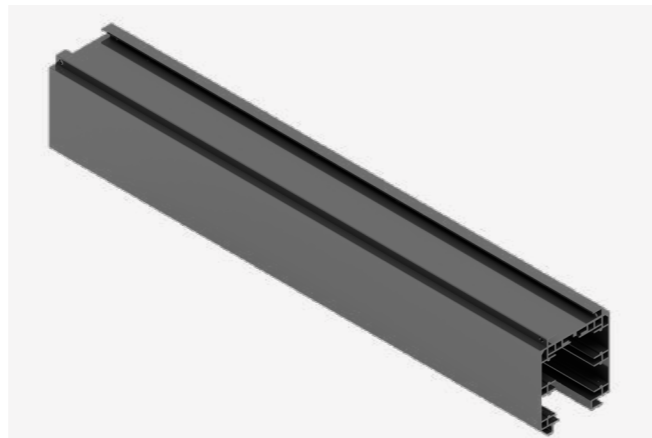
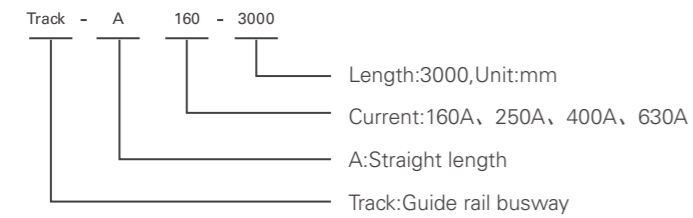
Straight length

The housing is made of high-strength aluminum-alloy material, with light weight, surface electrophoresis or anodic oxidation treatment, strong resistance to salt fog and corrosion.

- Length customization range: 350 ~ 3000mm

- Conductor type is as follows:

- Model definition



End tap box

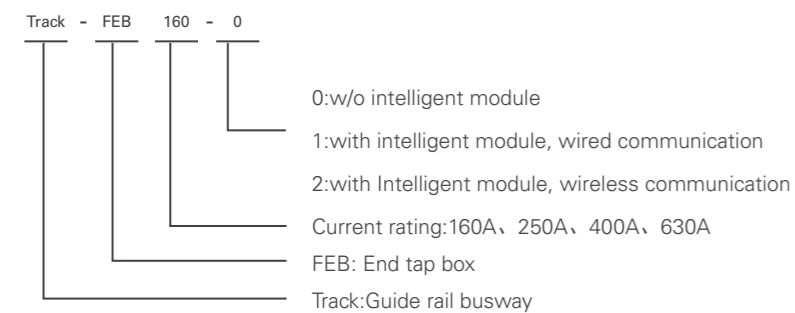
End tap box is the end feeding unit in the busway layout, which is used to manage the power supply. The enclosure is made of high quality steel plate with high strength. The box comes with one section of feeder busway, it can monitor current/ voltage/ active power/power factor/ three phase balance/temperature online.

- Total electric quality measurement, monitor electric energy quality in real time.

- Through the setting of early warning thresholds such as temperature and humidity, fault early warning is carried out in advance;

- Manual or remote ON & OFF for busway trunking.

- Model definition:



Plug in box

Plug in box is the necessary component to send electric energy from the busway to the cabinet;

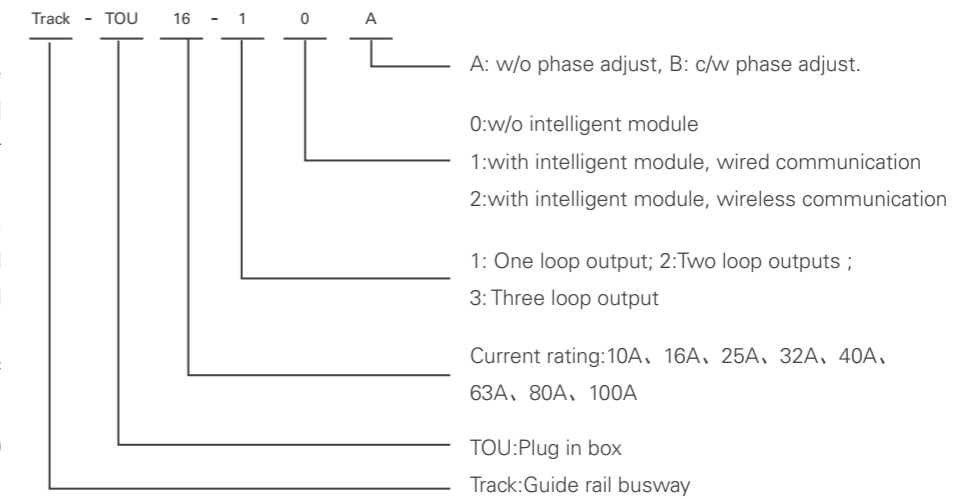
- A variety of connection modes can be selected (Industrial inclined socket and straight socket), various configuration for wide application

- Support a variety of communication protocols, RS485 / modbus, customized protocol on demand, branch wired and wireless Lora.

- Transmission plug is of error-proof design.

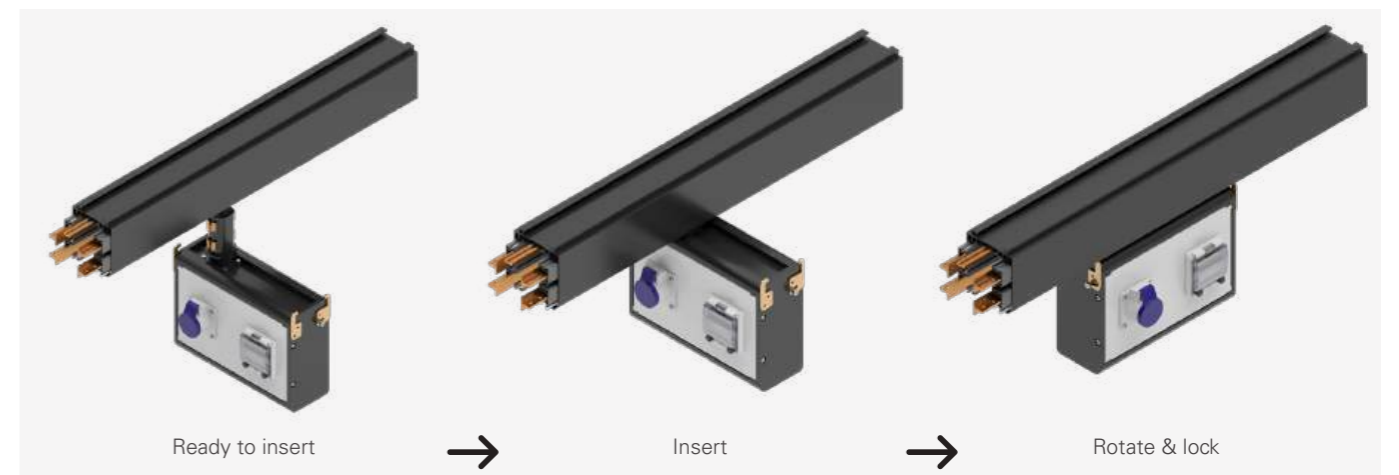
- Convenient installation, and rotating 90 degrees will furnish the installation.

- Model definition:



- Reliable contact and safety

When inserting, only the ground wire is connected; When pulled out, the ground wire is disconnected at last.



XAPTrack Series Busway

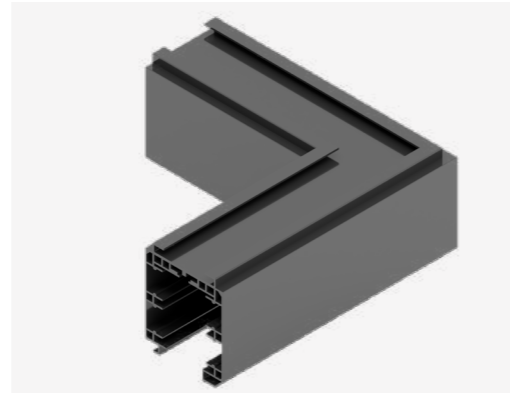
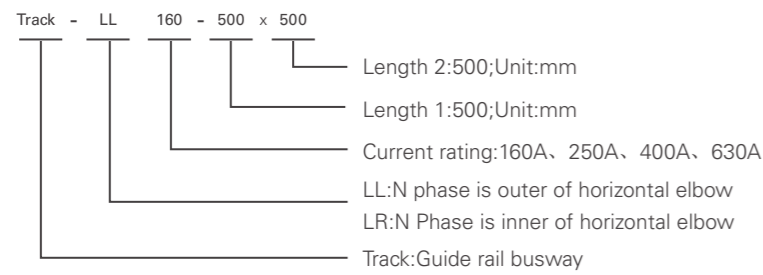
Functional unit

Horizontal elbow

Horizontal elbow is used to meet the requirements of horizontal arrangement of busway.

The maximum rated current is 630A, and the standard length dimension is 400*400 mm. It can be customized according to the actual site conditions to meet various complex site installation requirements.

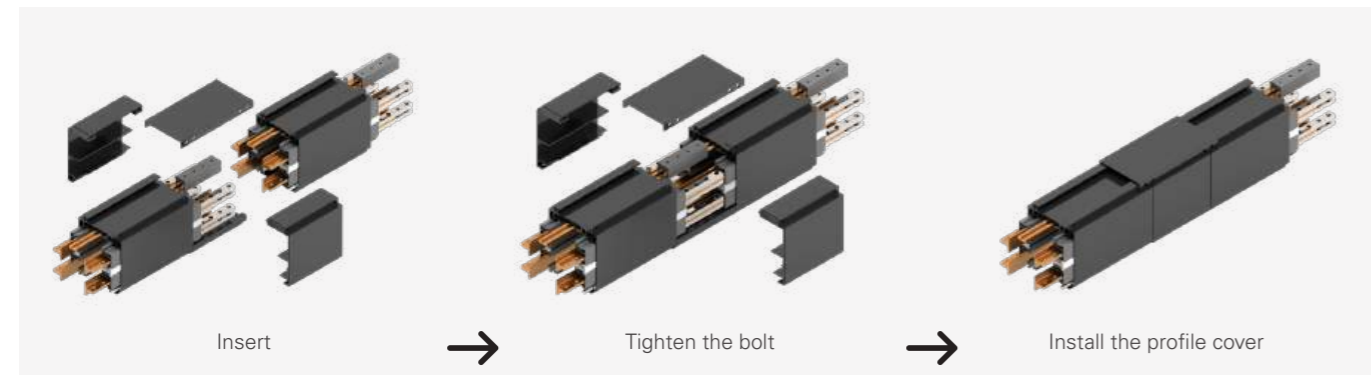
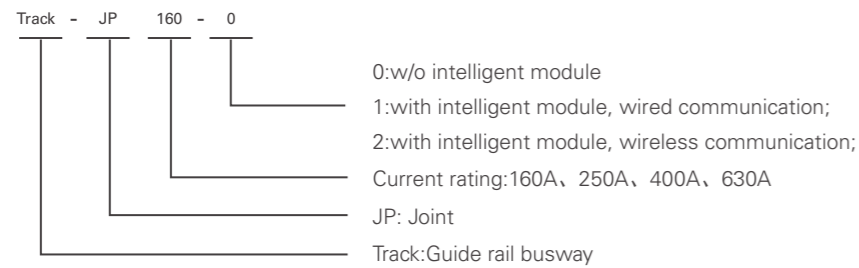
■ Model definition:



Joint

The joint is used to connect two adjacent busway. The busway is pre equipped with joint components, including extending bar, fixed profiles and fixed bolts with durable structure.

■ Model definition:



Sealing Plate

Sealing plate, made of ABS material, is used to seal the bottom opening of busway. The standard length is 500mm. It can be cut on site per the demand. After installation, the personal safety protection and product protection degree can be improved.

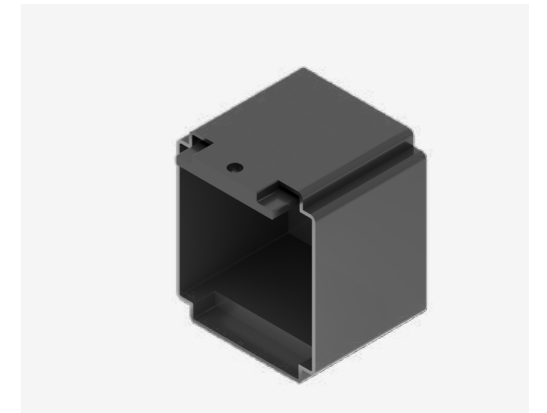
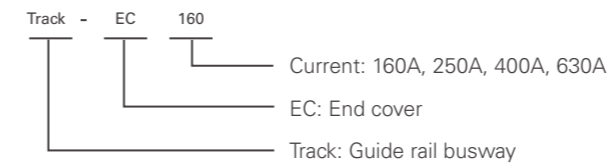
■ Model definition:



End Cover

End cover is made of PC flame retardant material, which can effectively block busway end for a long time to prevent outside matters from entering. It is easy to install and remove. When the arrangement of busway needs to be increased or adjusted, the end cover can be removed at any time to facilitate the expansion and connection of the busway in the future.

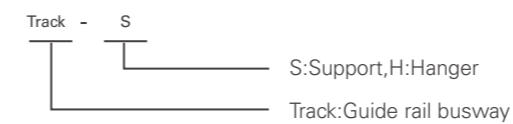
■ Model definition:



Support hanger

We offer specially designed hanger for the installation of track busway in the data center, including hanger and support two types, which guarantee reliable installation of busway, end tap box and plug in box.

■ Model definition:



XAPTrack Series Busway

Guide Rail Busway Power Monitoring System

- Full power and full point temperature monitoring, real-time understanding of busway operation;
- Integrated circuit monitoring system can monitor electrical parameters such as current and voltage . Support multiple communication modes;
- Integrated A-alloy housing with beautiful and durable performance.
- DCIM is safer and more reliable. It uses standardized power transmission and connection to improve the operation efficiency and protection level.;
- XAPTrack Busway system includes intelligent end tap box meter, intelligent plug in box and temperature measurement module ;
- The plug in box meter and temperature measurement module are connected in series, gathered to the end tap box meter, uploaded to the switch and displayed on the HMI screen. It can carry out real-time monitoring on the whole power and the operation status through the whole busway layout.



Eaton's mission is to improve the quality of life and the environment through the use of power management technologies and services. We provide sustainable solutions that help our customers effectively manage electrical, hydraulic, and mechanical power – more safely, more efficiently, and more reliably. Eaton's 2021 revenues were \$19.6 billion, and we have about 85000 employees worldwide and sell products to customers in more than 175 countries.

Eaton has been deeply involved in the Chinese market for more than 20 years, and has made rapid development since entering the Chinese market in 1993. In 2004, the company's Asia Pacific headquarters moved from Hong Kong to Shanghai. Greater China has about 8000 employees, 19 manufacturing bases and 5 R & D centers. Today, Eaton's the vast majority of products have been made in China.

For more information, pls visit Eaton Company Official website:www.eaton.com.cn

Eaton wechat:[Eaton_China](#)



EATON Busway (Jiangsu) Co., Ltd.

No. 508 Ganglong Road, Yangzhong Economic Development Zone, Zhenjiang City 212212, P.R. China

For further information, please visit our website:www.eaton.com.cn

Customer Service Center

Te: +86 511 8821 0138

Information in this catalog is subject to confirmation by business department personnel, may change due to product upgrades and technical standards. We reserve the right of final interpretation of this information, and is subject to change without notice.